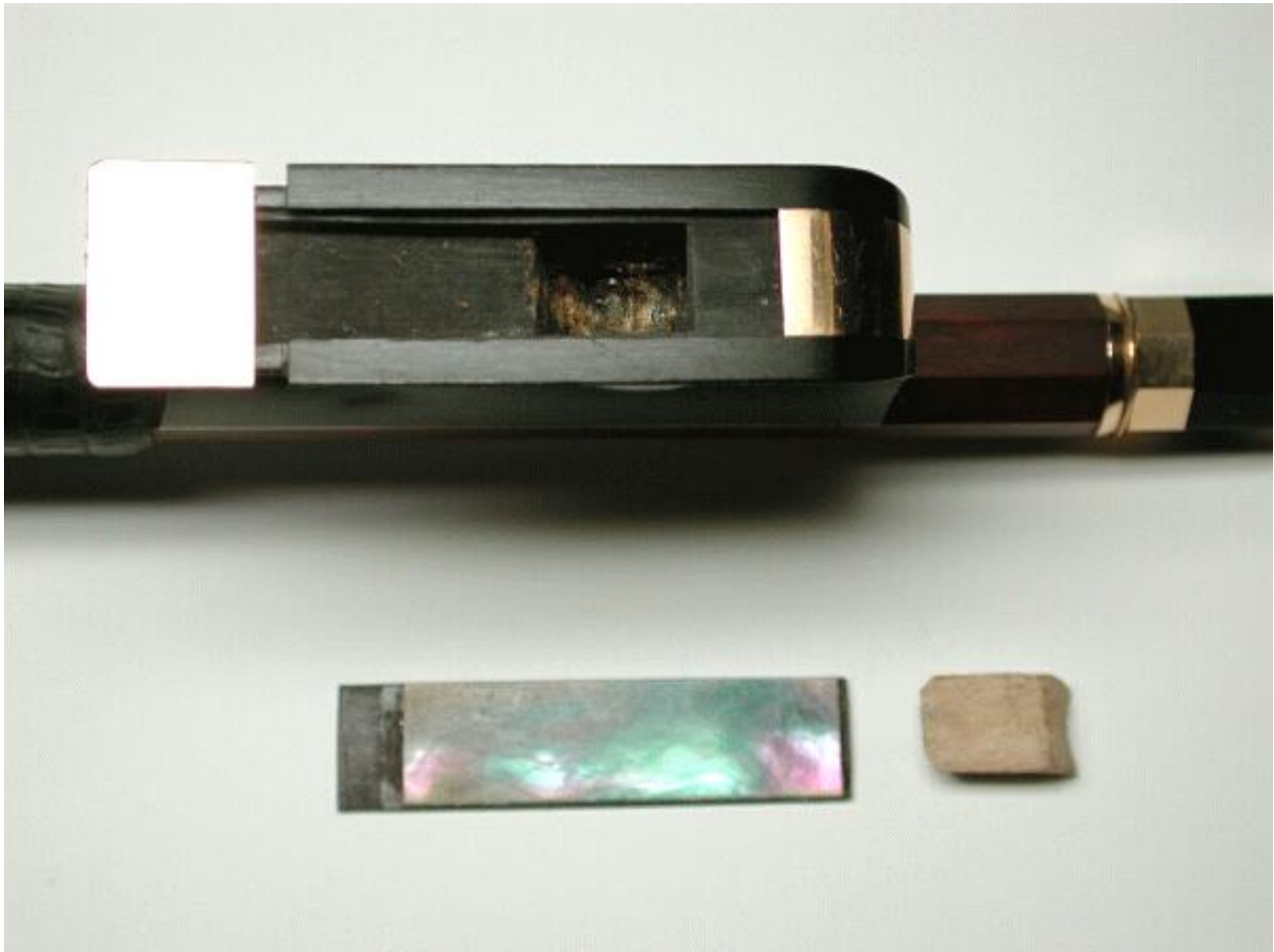


# Bow Rehairing

## Rehairing



Disassembled frog with a mother-of-pearl slide, a frog wedge and a gold ring.



Corresponding bows head and the head wedge.

[Top](#)

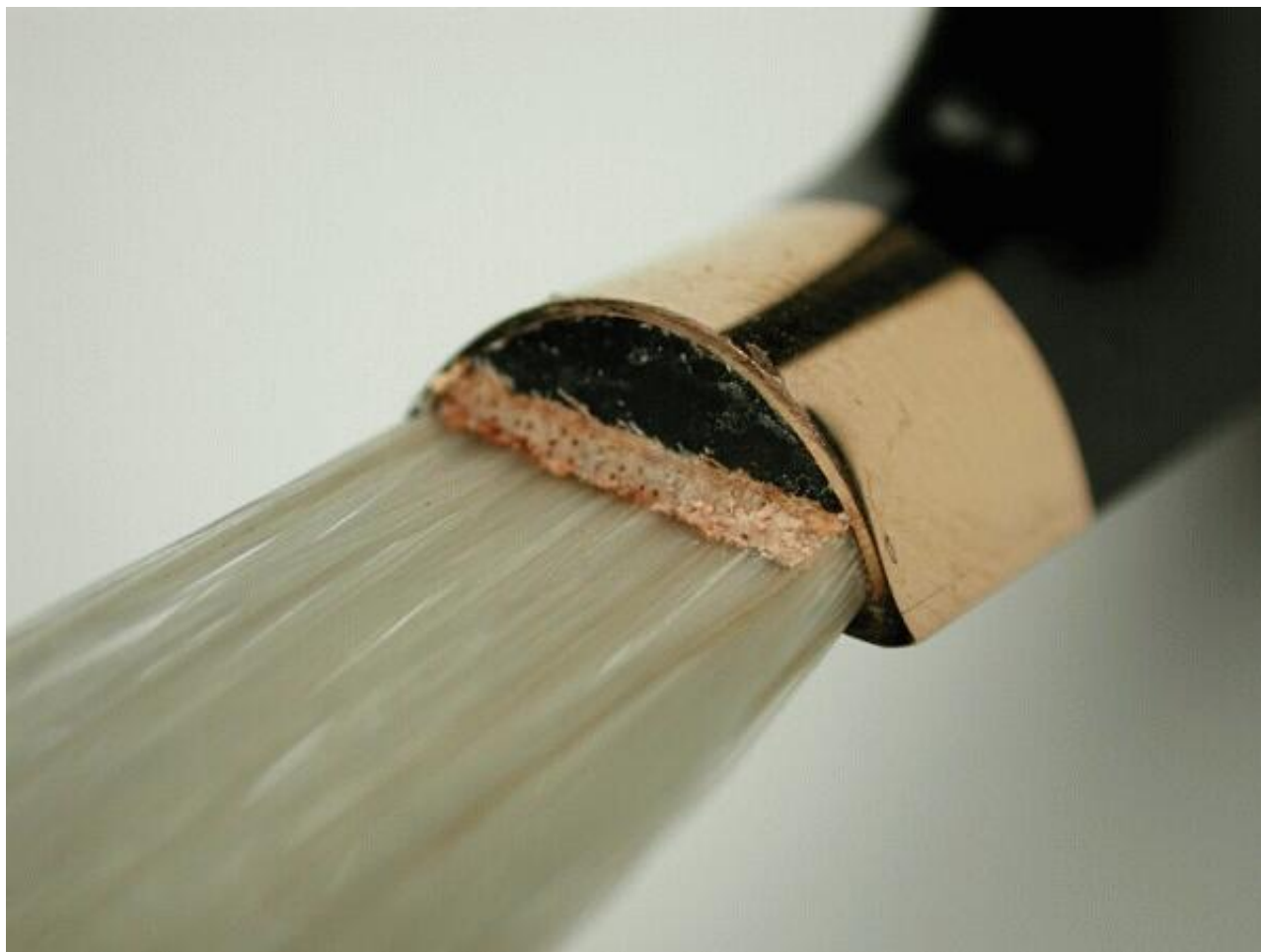


Tied bow hairs (from Mongolian white stallions) that have been singed with rosin.



Hairs that have entered the frog and are fastened into place using a wedge and not glue.

[Top](#)



The middle wedge which is used to flatten the hair as it enters the mortise and to evenly distribute the hairs, it is formed so that the hairs on the playing side are turned over again (the photo shows a cello bow).



Hairs are shown in the mortise at the head of the bow.



Hairs that are in the hair block at the head of the bow are fastened with a wedge only and never glued!