

Plane

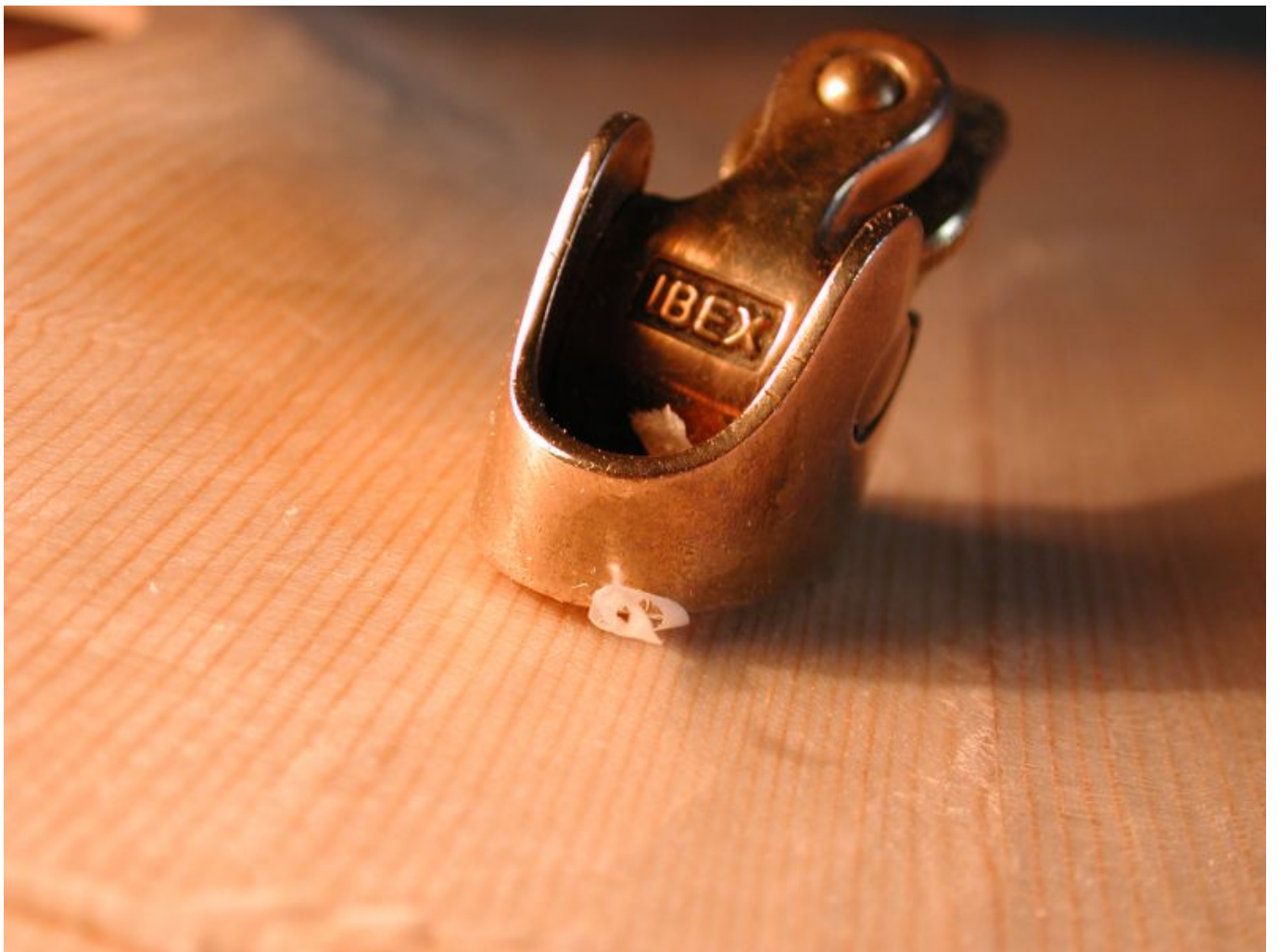
Luthiers use various types of planes, usually made of metal. Their sizes range from 1 cm for a brass arching plane to 60 cm for long caulking planes. Planes are precision tools, and the violin builder goes to great lengths to care for their planes. The soles must be perfectly intact and, where even-soled, they must be perfectly aligned in all directions. The violin maker gives his planes a hollow grinding and keeps them razor-sharp.

Planes are used extensively for violin building as well as in their repair.

The making of a violins ribs, belly, back, blocks, rings, purfling, bridge and bass bar all require the use of planes.



Joint Plane



Small Arching Plane

[back](#)